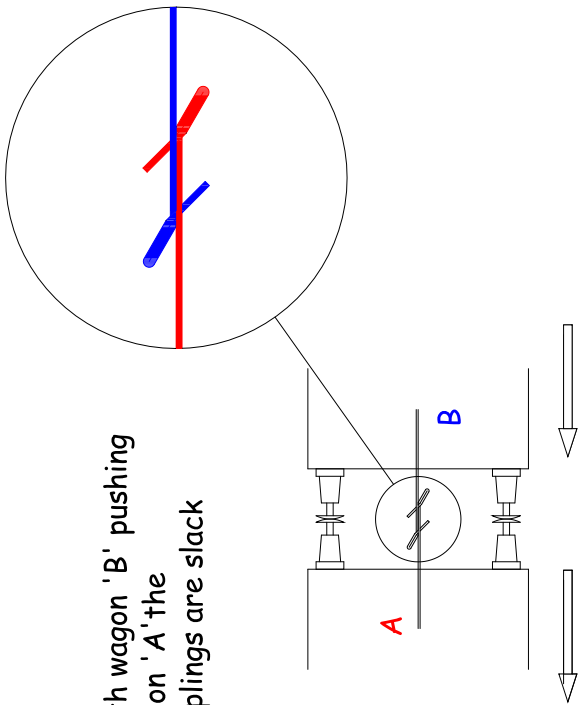


Uncoupling

With wagon 'B' pushing wagon 'A' the couplings are slack

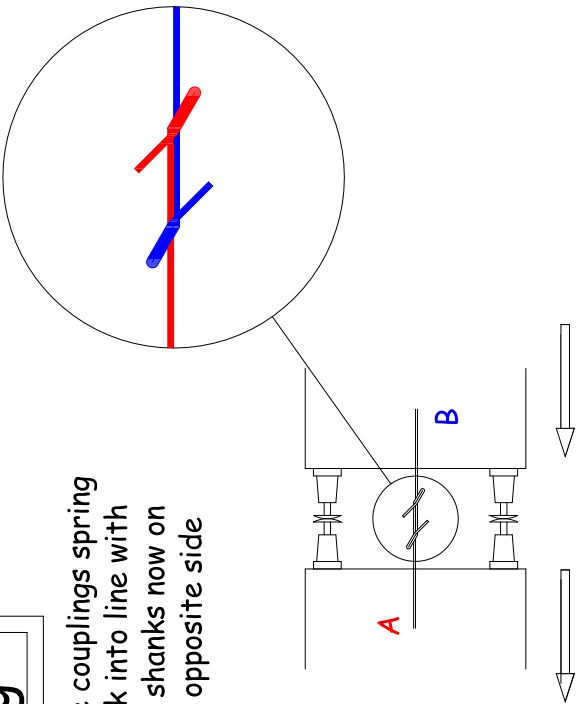


1

Waggon Uncoupling(circt)

Copyright 6.C. Wilson 2007

The couplings spring back into line with the shanks now on the opposite side

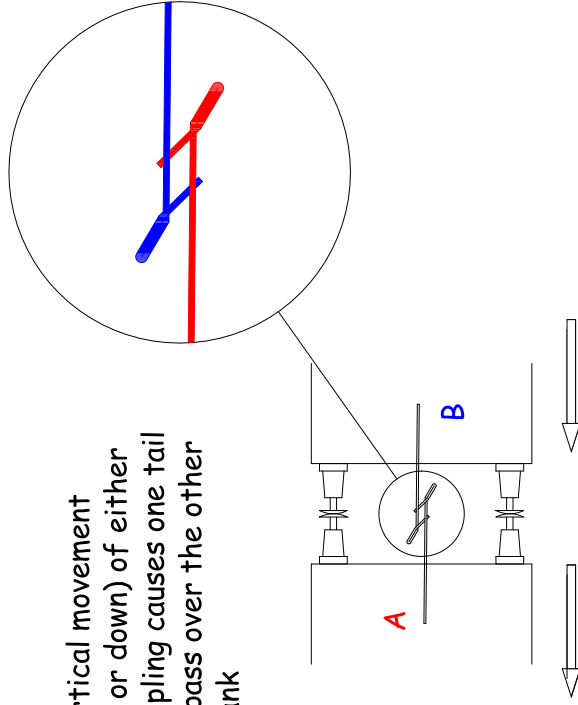


3

Waggon Uncoupling(circt)

Copyright 6.C. Wilson 2007

Vertical movement (up or down) of either coupling causes one tail to pass over the other shank

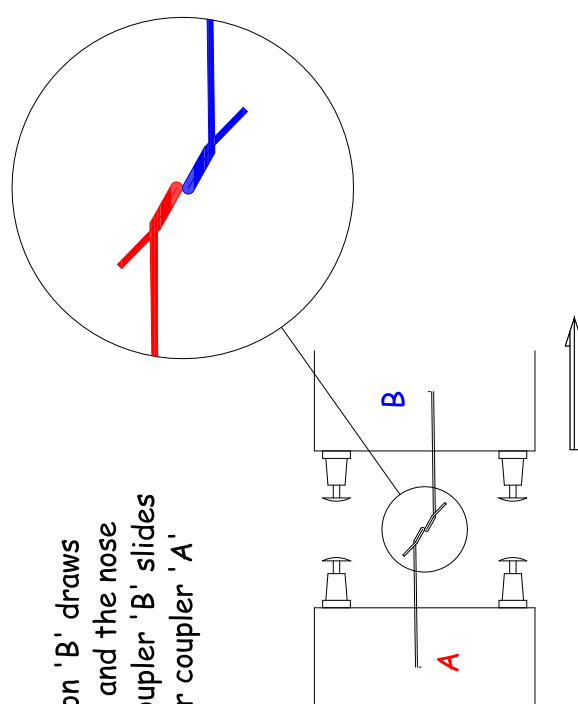


2

Waggon Uncoupling(circt)

Copyright 6.C. Wilson 2007

Wagon 'B' draws away and the nose of coupler 'B' slides under coupler 'A'



4

Waggon Uncoupling(circt)

Copyright 6.C. Wilson 2007

V01/03/07